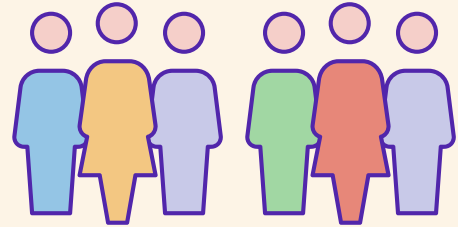




Pathways in aged care

2013-14

90% of people who entered residential care in 2013-14 had used aged care services previously



On average, people move



54 km

to permanent residential care

People living in Major cities moved an average of 39kms, compared with

over 400kms

for people living in remote and very remote areas



People who last used

respite residential care



Were less likely to have moved for permanent residential care



People with

carers were more likely to move less than 10km to enter residential care

25%

of people stayed in the same immediate area when they entered care

