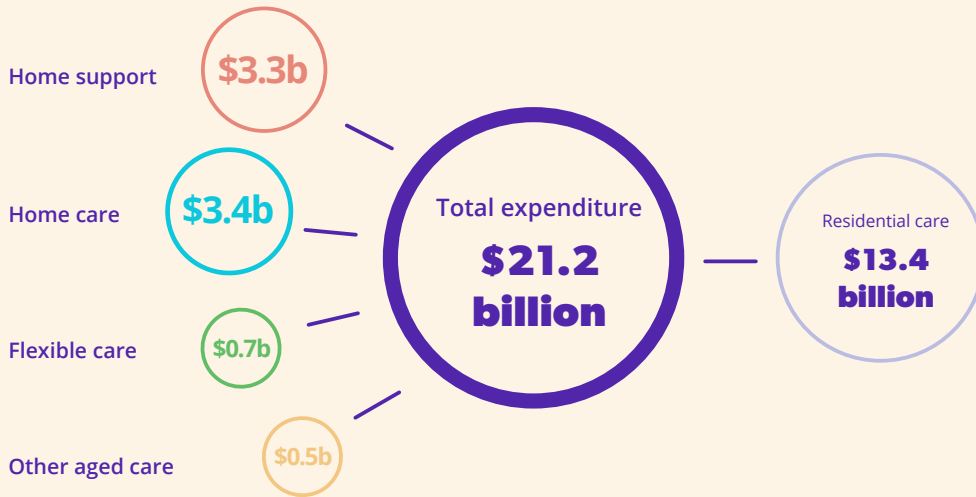




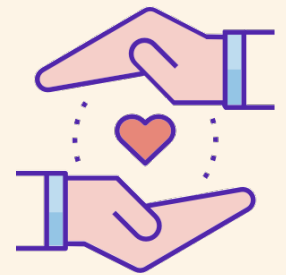
ROACA key facts

2019–20

Nearly **64 per cent** of aged care expenditure was on residential aged care.



More than **1,450** organisations were funded to deliver CHSP services.



1,452
Home support

There were **845** approved providers of residential aged care and **920** approved providers of home care packages.



845
Residential care

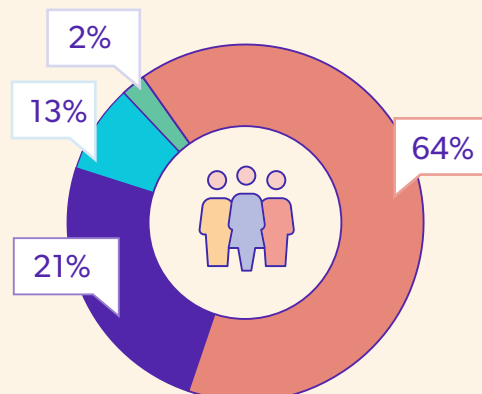


920
Home care



129
Flexible care

Two-thirds of aged care consumers accessed basic support at home.



- Home support
- Residential care
- Home care
- Restorative care

Source: 2019–20 Report on the Operation of the Aged Care Act 1997