

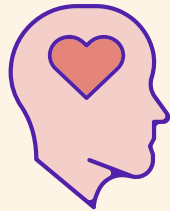


People's care needs in permanent residential aged care

2018-19

Around 6 in 7 people

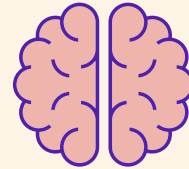
in permanent residential aged care have at least one diagnosed



Mental health
or behavioural condition

Around 1 in 2 people

in permanent residential aged care had



Dementia



Depression

People with dementia

have higher care needs



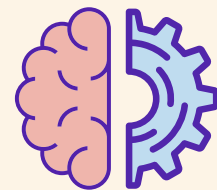
People born in... Non-English speaking countries
have higher care needs



The number of people with a high care need has **increased** since 2009

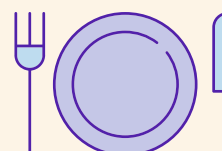
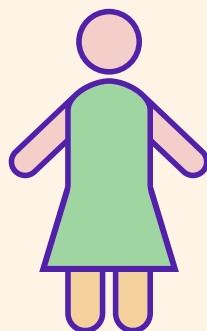
High care needs are higher for Cognition and behaviour

64%
Cognition and behaviour



Care needs are highest for women

regardless of age



60%
Activities of daily living

52%
Complex health care

