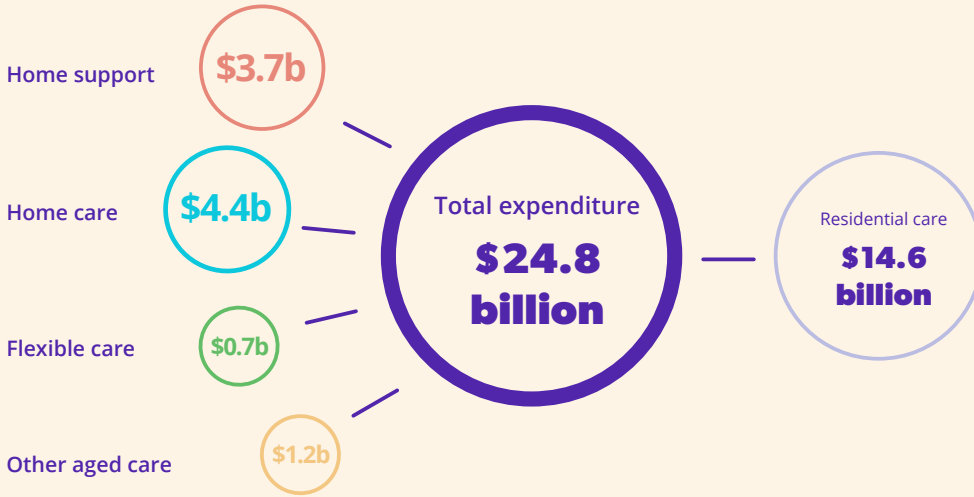




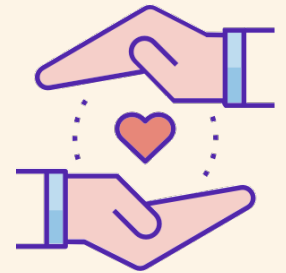
ROACA key facts

2021-22

Nearly **59 per cent** of aged care expenditure was on residential aged care.



More than **1,400** organisations were funded to deliver CHSP services.



1,407
Home support

There were **805** approved providers of residential aged care and **916** approved providers of home care packages.



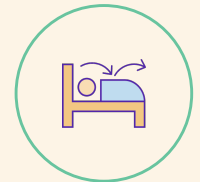
805

Residential care



916

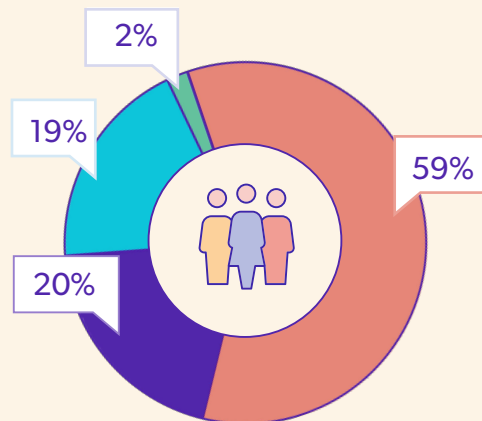
Home care



134

Flexible care

Almost **two thirds** of aged care recipients accessed basic support at home.



- Home support
- Residential care
- Home care
- Restorative care

Source: 2021-22 Report on the Operation of the Aged Care Act 1997