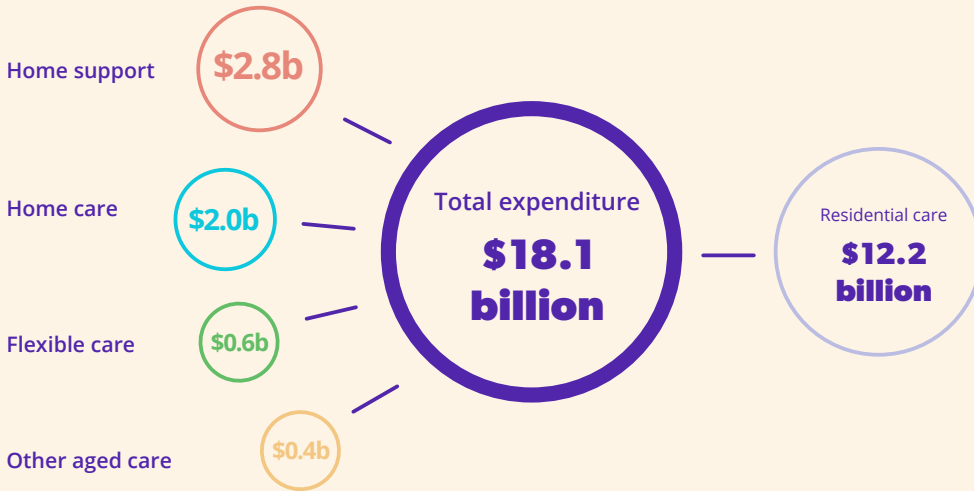




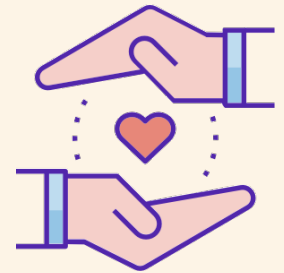
ROACA key facts

2017-18

Nearly **70 per cent** of aged care expenditure was on residential aged care.



More than **1,450** organisations were funded to deliver CHSP services.



1,456

Home support

There were over **880** approved providers of residential aged care and over **870** approved providers of home care packages.



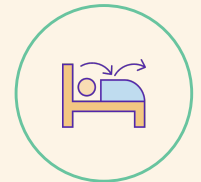
886

Residential care



873

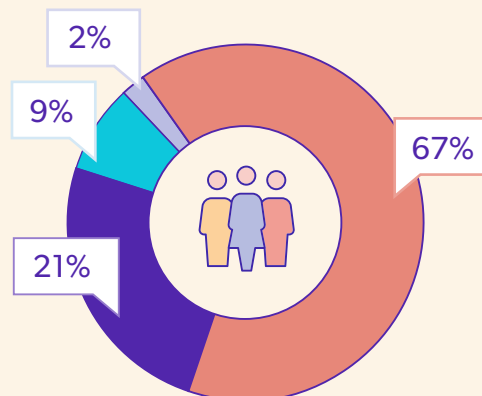
Home care



100

Flexible care

Two-thirds of aged care consumers accessed basic support at home.



- Home support
- Residential care
- Home care
- Restorative care

Source: 2017-18 Report on the Operation of the Aged Care Act 1997