



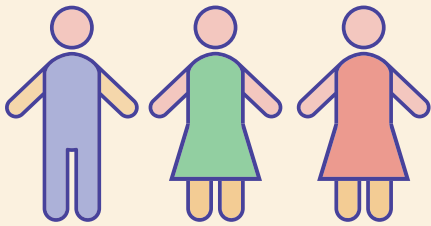
# People using aged care<sup>1</sup>

2015-16

The number of people in aged care has

<b>increased by 31% over the last decade</b>	2006	189,000
	2011	223,000
	<b>2016</b>	<b>249,000</b>

**69%**  
 of people  
 in aged care  
**were in a  
 major city**

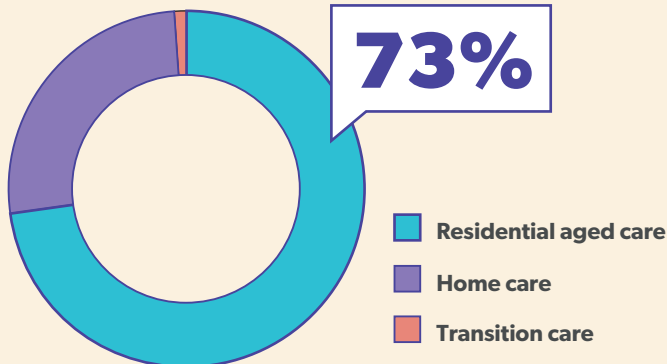


**2 in 3 people**  
 in aged care  
 are women

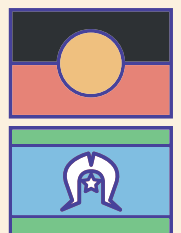
**The majority of people**  
 using aged care were in  
 residential aged care



**1 in 3 people**  
 in residential aged care  
 were born overseas



**Only 1% of people**  
 in residential aged care  
 identified as Aboriginal  
 or Torres Strait Islander



<sup>1</sup> This infographic excludes the Commonwealth Home Support Programme and Home and Community Care program.