

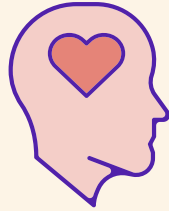


# People's care needs in aged care

2017-18

**6 in 7  
people**

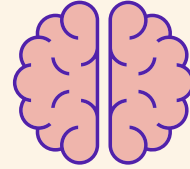
in permanent  
residential aged care  
have at least  
one diagnosed



**Mental health**  
or behavioural condition

**Around  
1 in 2  
people**

in permanent  
residential aged care  
have



**Dementia**



**Depression**

**People with  
dementia**

have higher care needs



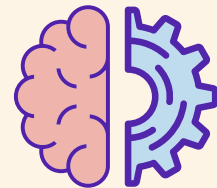
**People born in...  
Non-English  
speaking countries  
have higher care needs**



The number of people  
with a high care need  
has **increased**  
over the years

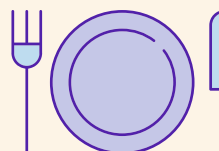
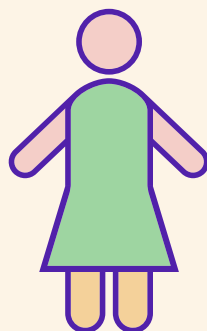
**High care needs are greatest for  
Cognition and behaviour**

**64%**  
Cognition and  
behaviour



**Care needs  
are highest  
for women**

regardless  
of the age group



**59%**  
Activities of  
daily living

**53%**  
Complex  
health care

