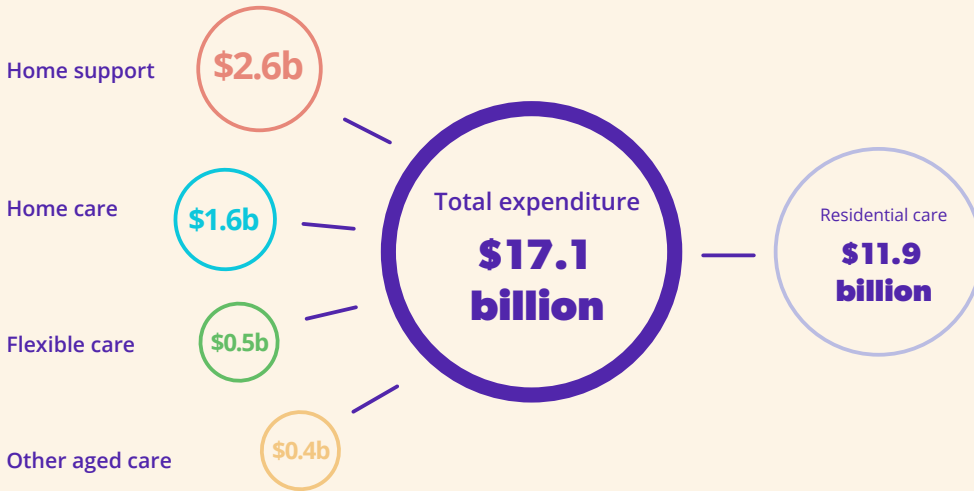




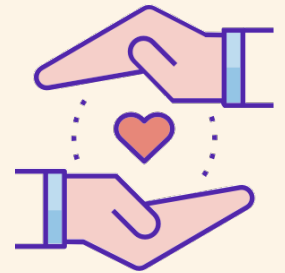
ROACA key facts

2016-17

Nearly **70 per cent** of aged care expenditure was on residential aged care.



More than **1,520** organisations were funded to deliver CHSP services.



1,523

Home support

There were over **900** approved providers of residential aged care and over **700** approved providers of home care packages.



902

Residential care



702

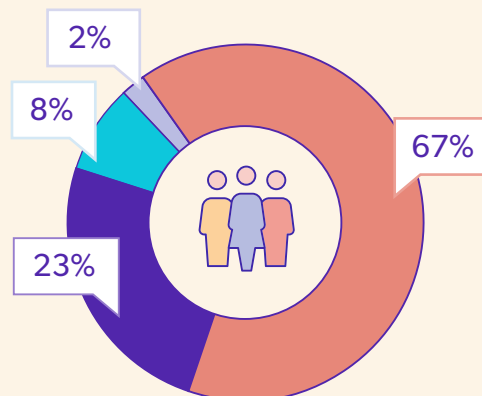
Home care



96

Flexible care

Two-thirds of aged care consumers accessed basic support at home.



- Home support
- Residential care
- Home care
- Restorative care

Source: 2016-17 Report on the Operation of the Aged Care Act 1997