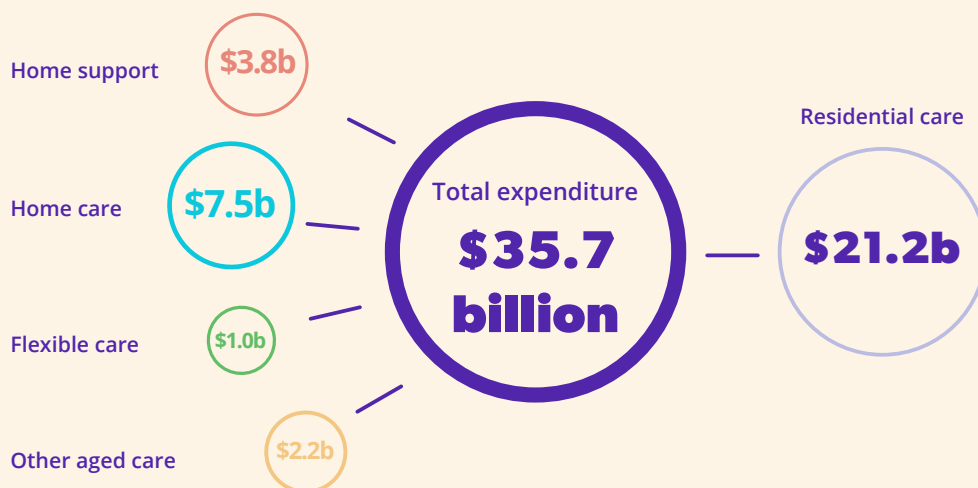




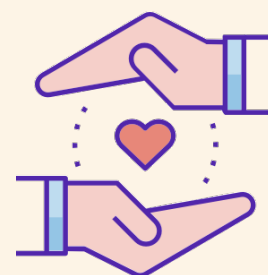
ROACA key facts

2023–24

Nearly **60%** of aged care expenditure was on residential aged care.



More than **1,260** organisations were funded to deliver CHSP services.



1,265
Home support

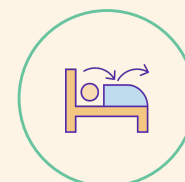
There were **736** approved providers of residential aged care and **909** approved providers of home care packages.



736
Residential care

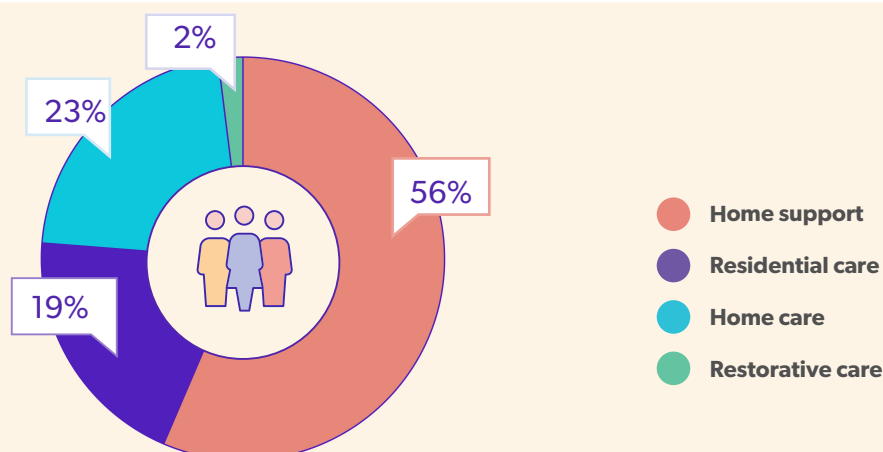


909
Home care



144
Flexible care

More than half of aged care recipients accessed basic support at home.



Source: 2023–24 Report on the Operation of the Aged Care Act 1997