

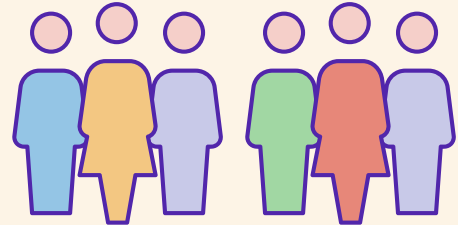


Admissions into aged care

2016-17

Over 215,000

people entered residential, home or transition care in 2016-17



2 in 3 people

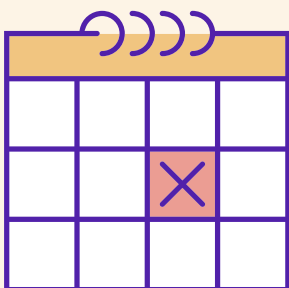
entering aged care moved into residential care



20% of people entering aged care used home care

The median number of days

between being approved for and entering permanent residential care was



105 days

Over half of people moving into permanent residential care were aged **85 years and over**



The number of people entering home care has increased over the last 5 years by

39%

