

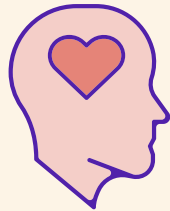


People's care needs in aged care

2016-17

**6 in 7
people**

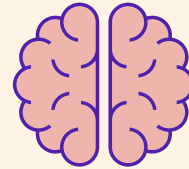
in permanent
residential aged care
have at least
one diagnosed



Mental health
or behavioural condition

**Around
1 in 2
people**

in permanent
residential aged care
have



Dementia



Depression

**People with
dementia**

have higher care needs



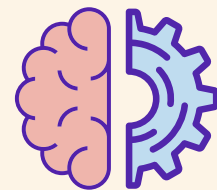
**People born in...
Non-English
speaking countries
have higher care needs**



The number of people
with a high care need
has **increased**
over the years

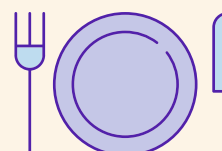
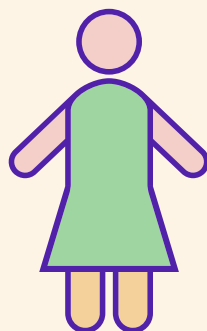
**High care needs are greatest for
Cognition and behaviour**

63%
Cognition and
behaviour



**Care needs
are highest
for women**

regardless
of the age group



57%
Activities of
daily living

55%
Complex
health care

