

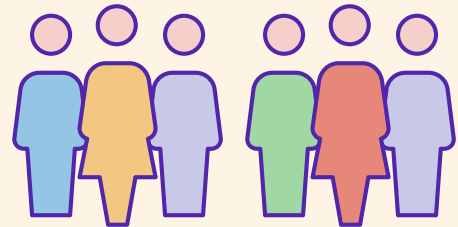


People leaving aged care

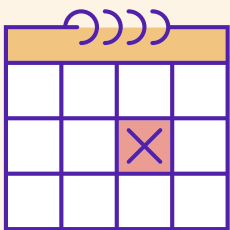
2017-18

199,000 people

left residential aged care, home care or transition care in 2017-18



On average, people stay

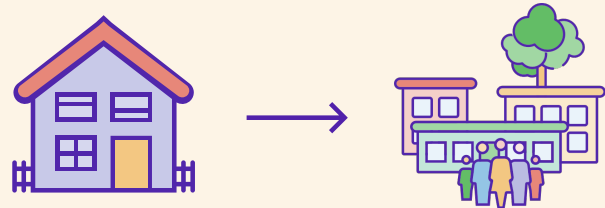


2.5 years

in permanent residential care

Over half of people

who left home care moved into residential care



Women stay in

permanent residential care

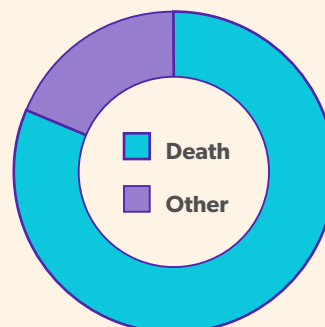


10 months longer than men

People use home care for an average of 2 years,

six months less

than permanent residential care



83%

of people leave permanent residential care due to death