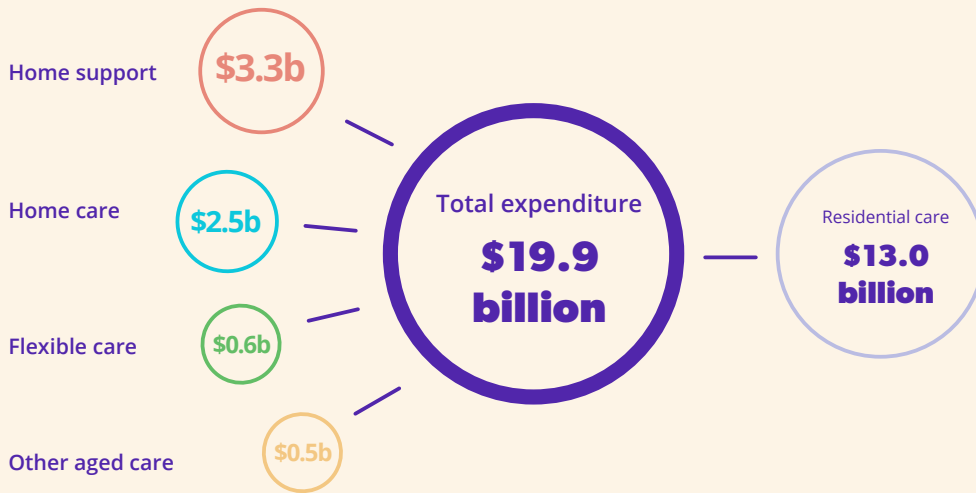




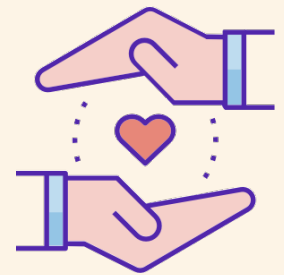
# ROACA key facts

2018-19

Nearly **66 per cent** of aged care expenditure was on residential aged care.



More than **1,450** organisations were funded to deliver CHSP services.



**1,458**  
Home support

There were over **870** approved providers of residential aged care and over **920** approved providers of home care packages.



**873**

Residential care



**928**

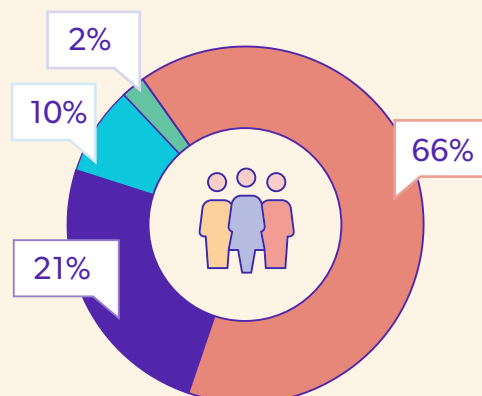
Home care



**119**

Flexible care

**Two-thirds** of aged care consumers accessed basic support at home.



- Home support
- Residential care
- Home care
- Restorative care

Source: 2018-19 Report on the Operation of the Aged Care Act 1997