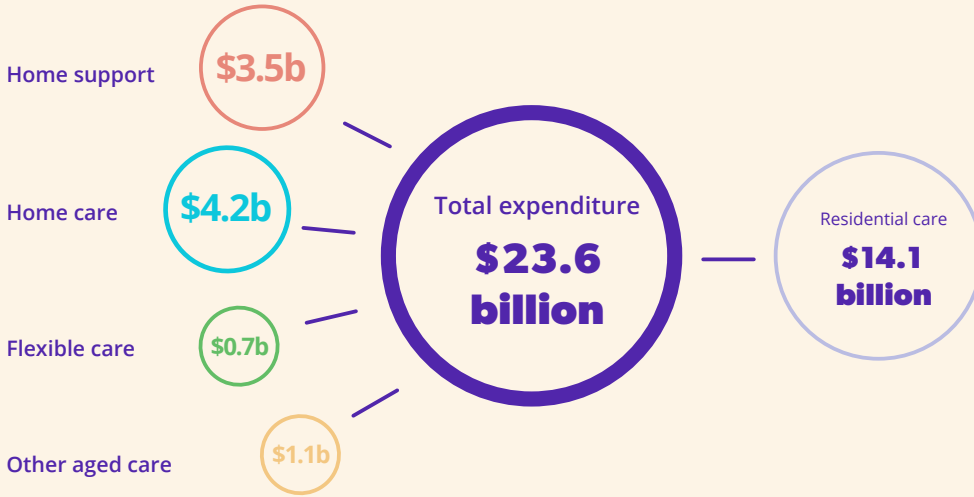




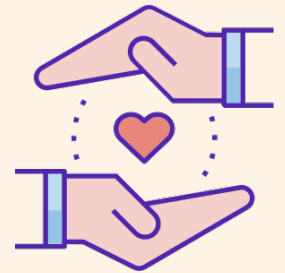
ROACA key facts

2020-21

Nearly **60 per cent** of aged care expenditure was on residential aged care.



More than **1,430** organisations were funded to deliver CHSP services.



1,432

Home support

There were **830** approved providers of residential aged care and **939** approved providers of home care packages.



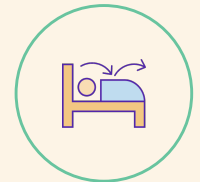
830

Residential care



939

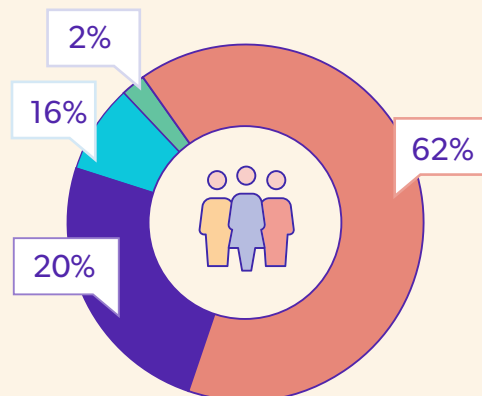
Home care



128

Flexible care

Almost **two thirds** of aged care consumers accessed basic support at home.



- Home support
- Residential care
- Home care
- Restorative care

Source: 2020-21 Report on the Operation of the Aged Care Act 1997